



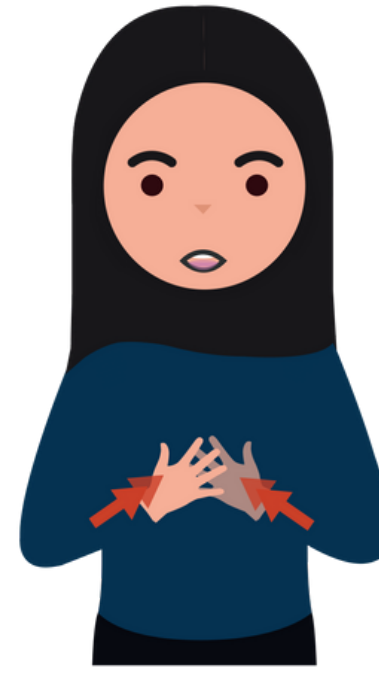
Monday

Fingerspell 'M' taps palm twice.
Mouth shape 'Monday'.



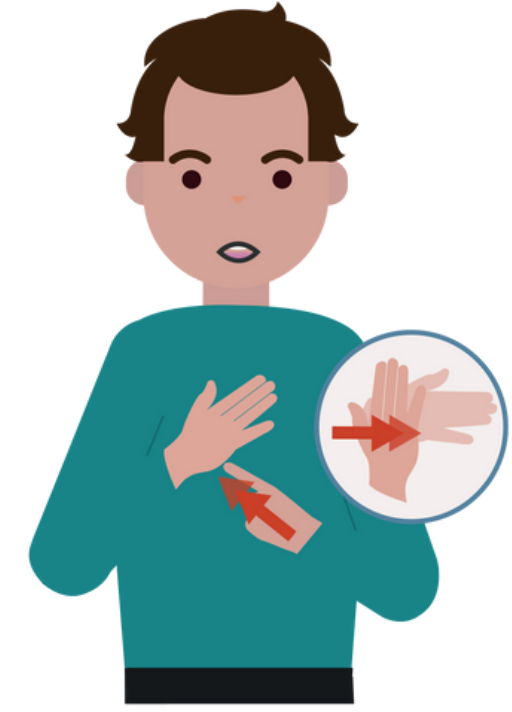
Tuesday

Fingerspell 'T' tap twice.
Mouth shape 'Tuesday'.



Wednesday

Fingerspell 'W' tap twice.
Mouth shape 'Wednesday'.



Thursday

Fingerspell 'T' then fingerspell 'H' in one fluid motion. Mouth shape 'Thursday'.



Friday

Fingerspell 'F' then the fingers on primary hand move in circular motion on top of stationary fingers.



Saturday

Hands flat in front of body, primary hand makes circular motions in front of stationary hand.



Sunday

Both hands open, palms facing. Palm to palm twice in front of body.

DAYS OF THE WEEK

