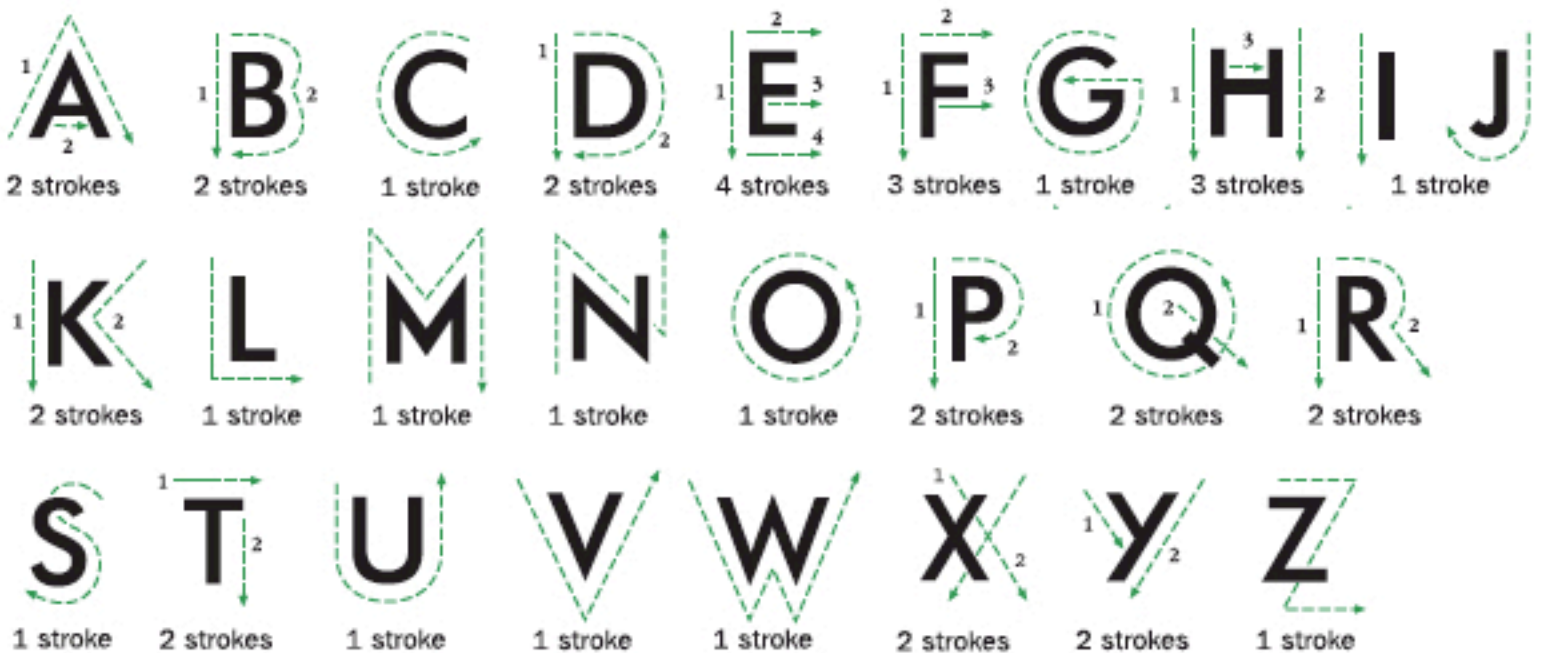
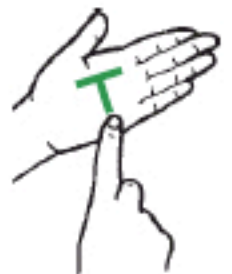


# Block Alphabet

Use your forefinger to trace ordinary capital letters on the palm of the other person's hand, each letter directly on top of the last.



The broken lines indicate the direction and sequence of strokes to be made on the palm.

☎ 0800 132 320

@ info@deafblind.org.uk

💬 07903 572885

🌐 www.deafblind.org.uk

📘 DBUKCharity

🐦 @DeafblindUK

Registered Charity number: 802976

Company Registration number: 2426281