

Hello

Wave hand left and right near side of head.



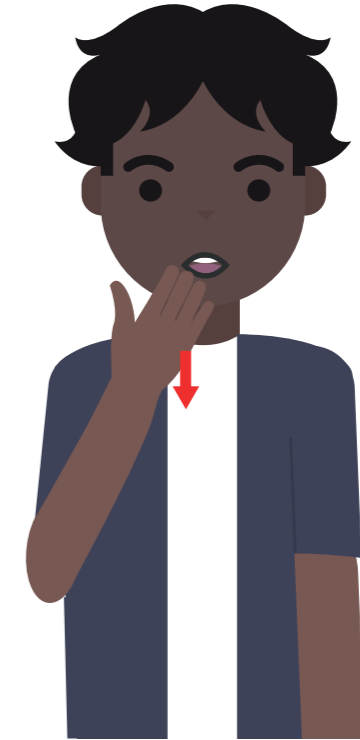
How are you?

Flat hands, fingers run up chest and then hands move forward into thumbs up.



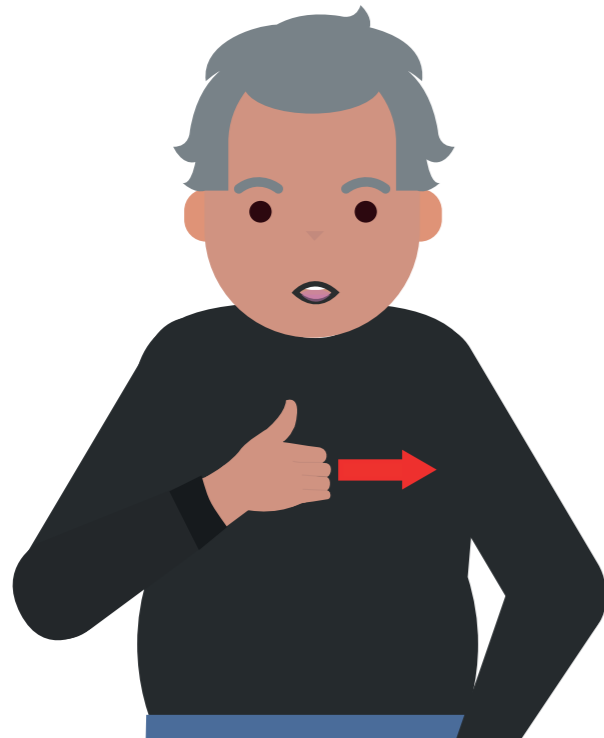
Sorry

Closed fist makes circular motion on chest.



Thank you

Flat hand, fingertips on chin. Hand moves down away from body.



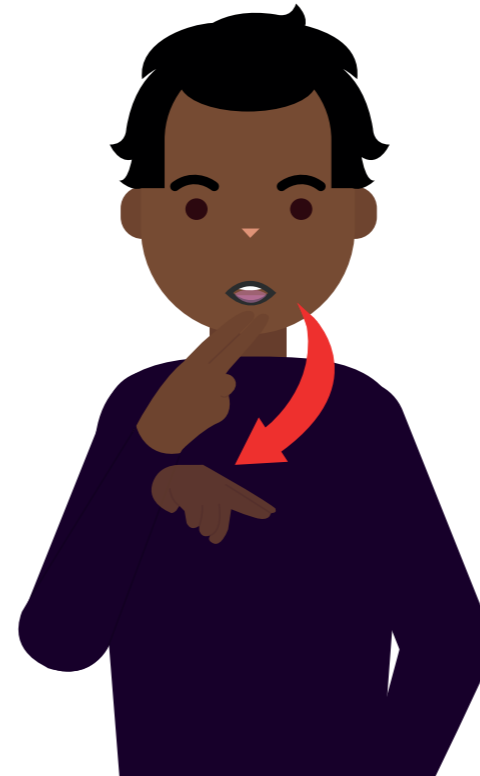
Good

Closed hand, thumb up, thrust forward. (Can be done with 1 or 2 hands).



Morning

Right hand bent, fingertips tap left far side of chest then right far side of chest.



Afternoon

Tip of index and middle finger touch chin, then hand twists so fingertips are facing forward.



Night

Open hands, palms inward move down in front of body.